

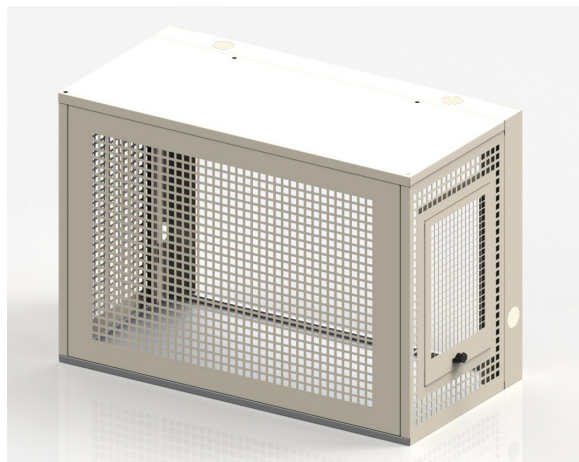
Heat Pump Covers

Enclosures for Outdoor Heat Exchanger Unit

Designed for domestic applications, these enclosures provide security and aesthetic enhancement for external heat exchangers. Ideal for installations close to residential dwellings, where the appearance can be greatly improved.



Conceal those unsightly “standard” external heat pump units



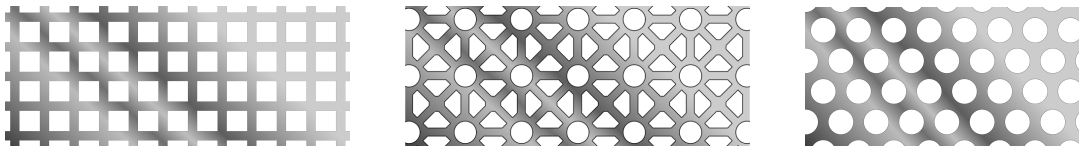
The cover includes an access door for servicing the heat pump, with knock-outs to accommodate a range of plumbing and wiring options.

Manufactured from durable G250-Z275 galv steel with durable powder coat finish in a range of standard colours & patterns.



Custom Dulux powder coat colours available for matching your specific cladding or trim colours.

A range of perforation patterns are available.



Enclosure Sizes

	Height	Depth	Length
A	800 mm	580 mm	1150 mm
B	1150 mm	700 mm	1250 mm
C	1550 mm	700 mm	1250 mm

Although we can custom make your cover, it packs flat to keep freight costs to a minimum.

